



GMT MONTHLY MEMBERSHIP PROGRESS REPORT

Results as of: 6/30/2024

Multiple District 202

LOCATION: NEW ZEALAND

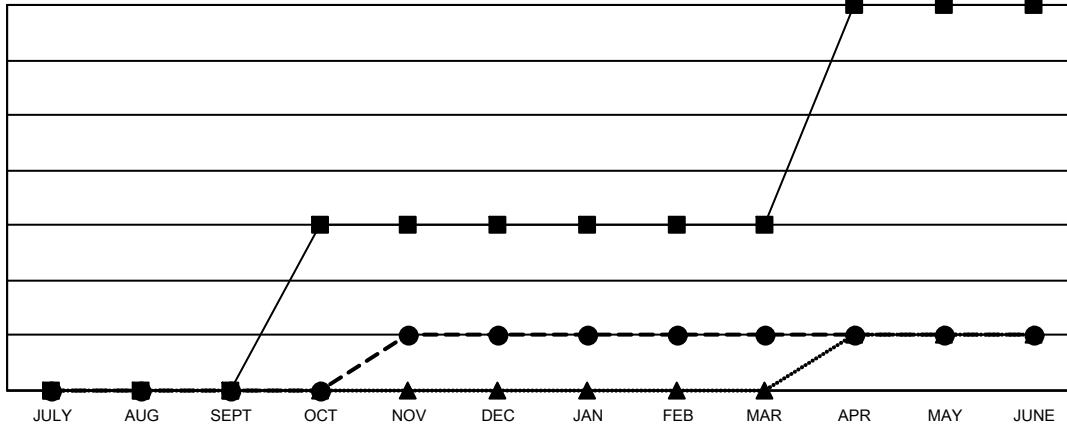
GMT: OPEN

GMT CA 7

Clubs			
RESULTS FOR 2023-2024			
QUARTER	NEW CLUB GOAL	NEW CLUBS	DROPPED CLUBS
JULY/AUG/SEPT	0	0	3
OCT/NOV/DEC	3	1	2
JAN/FEB/MAR	0	0	0
APR/MAY/JUNE	4	0	1

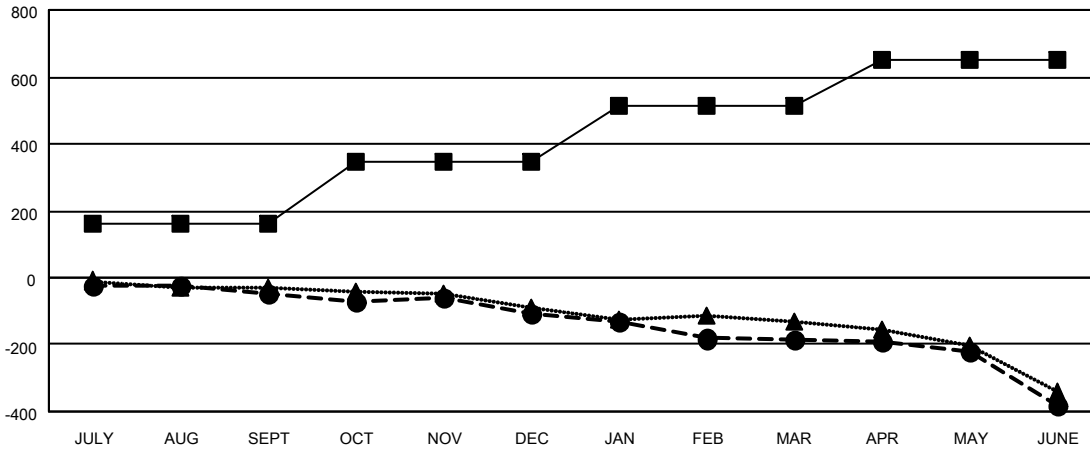
Members			
RESULTS FOR 2023-2024			
QUARTER	MEMBER GROWTH NET GOAL	MEMBER GROWTH ACTUAL	DROPPED MEMBERS ACTUAL (including transfers)
JULY/AUG/SEPT	162	183	200
OCT/NOV/DEC	182	185	227
JAN/FEB/MAR	168	102	167
APR/MAY/JUNE	139	225	381

GOALS AND ACTUAL NEW CLUBS CUMULATIVE



- - CURRENT YEAR GOALS FOR NEW CLUBS
- - CURRENT YEAR ACTUAL NEW CLUBS
- ▲ - LAST YEAR ACTUAL NEW CLUBS

GOALS AND ACTUAL MEMBERS CUMULATIVE



- - MEMBER GROWTH NET GOAL
- - MEMBER GROWTH ACTUAL
- ▲ - LAST YEAR MEMBERSHIP ACTUAL

DROPPED CLUBS: 6	
DROPPED MEMBERS	
DECEASED	119
CLUB CANCELLED	0
OTHER	851
TOTAL	970

201 CLUBS OF 300 ADDED 1 OR MORE NEW MEMBERS

GENDER DISTRIBUTION	
MALE	5,065 (67.05%)
FEMALE	2,489 (32.95%)

[CLICK HERE FOR CUMULATIVE MEMBERSHIP DATA](#)

TOTAL FAMILY UNIT MEMBERS	675
FAMILY MEMBERS PAYING HALF DUES	343